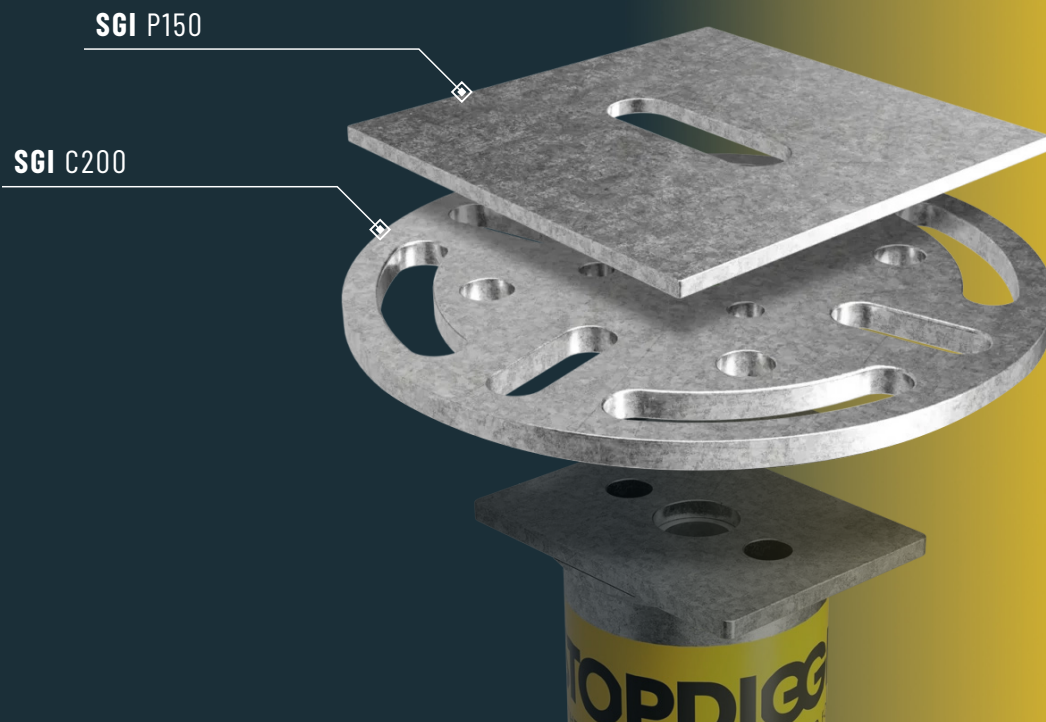


SGI PLATE

The SGI plates are designed to enable broader attachment points. These adapters widen the system surface and are well-suited for increasing attachment flexibility.



EXPECTED
MINIMUM
SERVICE LIFE

100
YEARS*

*Terms apply,
see warranty terms

**ADAPTERS
FOR EVERY
PROJECT AND
EVERY NEED**

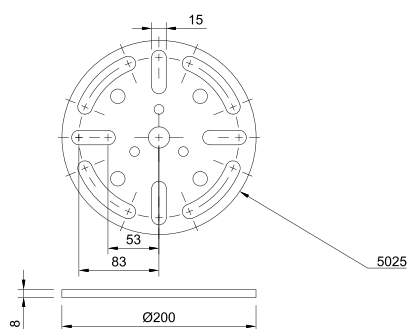
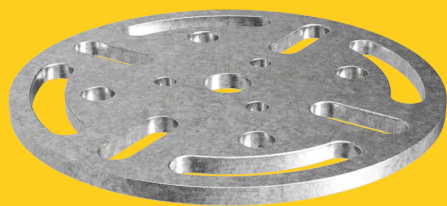
CERTIFICATE

Material	EN 10027-1:2016: S235 JR
Product CE	EN 1090
Galvanization	ISO 1461:2009
Manufacturing process	EN 1090 / ISO 9001:2015
Installation process	ISO 9001:2015
Expected min. service life*	100 years

*StopDigging stipulates an estimated minimum lifetime for its ground screws. The amount reflects the number of years an installed screw is expected to fulfill its technical purpose under normal conditions, and is based on many years of experience and research.

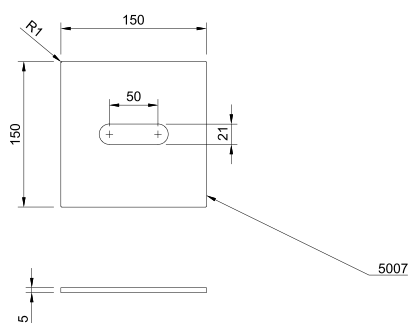
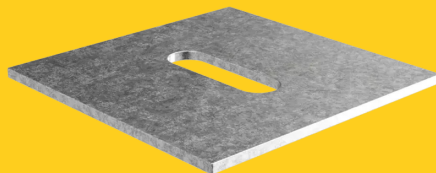
SGI C200

Art. no. 5025



SGI P150

Art. no. 5007



**THE FUTURE OF
SUSTAINABLE
FOUNDATIONS
IS HERE TO STAY**

**ZERO WASTE
MAX IMPACT**



MAIN OFFICE: GRUSTAGSGATAN 1B, 254 64 HELSINGBORG, SWEDEN
PHONE: +46 10 - 147 07 00 | **MAIL:** INFO@STOPDIGGING.SE